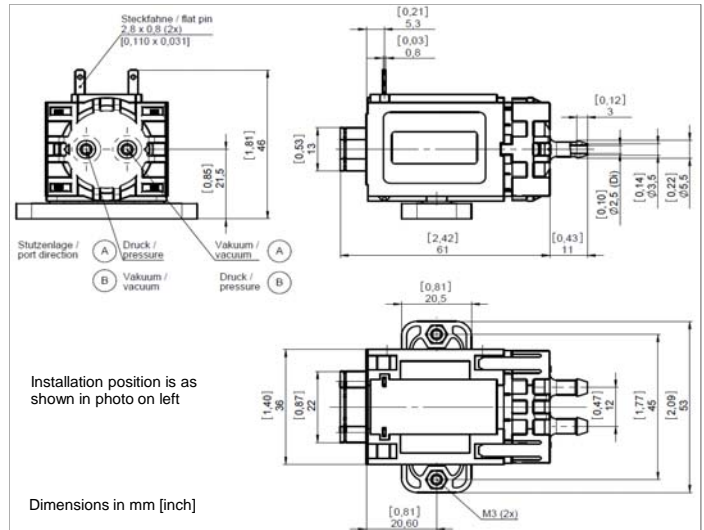
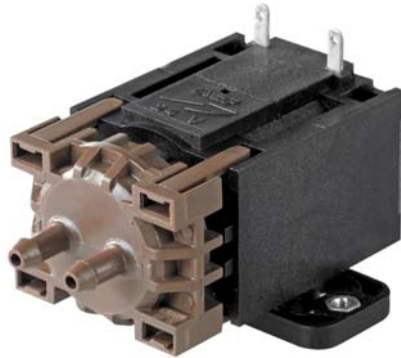


# Linear Diaphragm Pump LMG 4

**Flow at rated pressure 1000 ml/min**



## Pneumatic Data

Description	LMG-4-230V-50Hz	LMG-4-115V-60Hz	LMG-4-24V-50Hz	LMG-4-12V-50Hz
Part number	9340310	9341310	9343310*	9344310*
Flow at rated pressure	950 ml/min	1000 ml/min	950 ml/min	950 ml/min
Rated pressure	200 mbar	200 mbar	200 mbar	200 mbar
Operating pressure range	50 to 450 mbar	50 to 450 mbar	50 to 450 mbar	50 to 450 mbar
Flow at rated vacuum	900 ml/min	950 ml/min	900 ml/min	900 ml/min
Rated vacuum	10 %	10 %	10 %	10 %
Operating vacuum range	5 to 20 %	5 to 20 %	5 to 20 %	5 to 20 %

## Electrical Data

Motor type	Linear drive	Linear drive	Linear drive	Linear drive
Nominal voltage	230 V AC	115 V AC	24 V AC	12 V AC
Nominal frequency	50 Hz**	60 Hz**	50 Hz**	50 Hz**
Max. Consumption	35 mA / 4,7 W	65 mA / 4,2W	300 mA / 4,0 W	630 mA / 4,2 W
Consumption at rated pressure	33 mA / 4,5 W	60 mA / 4W	280 mA / 3,8 W	590 mA / 4,0 W

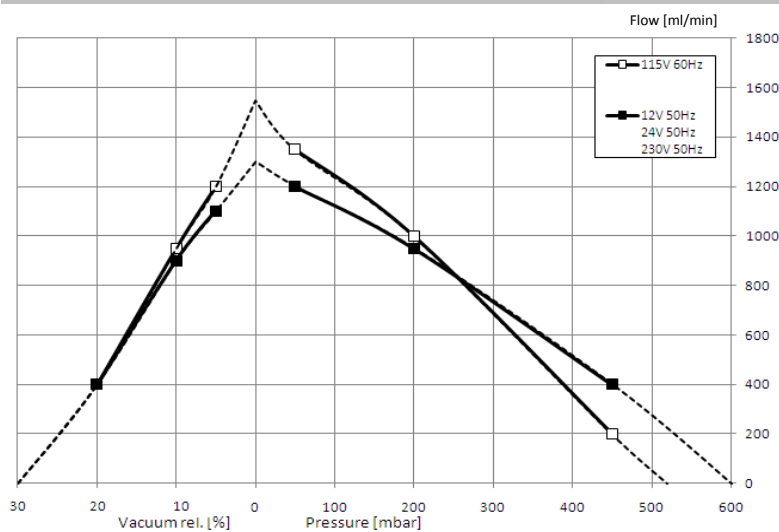
## General Data

Ambient temperature	0 to 50°C	0 to 50°C	0 to 50°C	0 to 50°C
Media temperature	0 to 50°C	0 to 50°C	0 to 50°C	0 to 50°C
Weight	160 g	160 g	160 g	160 g
Port direction	A	A	A	A

\* can be operated with DC in combination with oscillator P/N 90520

\*\* operation at other frequencies is possible but with impact on performance and pump life

## Flow Curve



## Wetted Parts

Nozzle plate	PPS (Ryton®)
Pump chamber	PP
Diaphragm	EPDM
Valves	EPDM

934... Stock programme

The information presented in this material is based on technical data and test results of nominal units. It is believed to be accurate and reliable and is offered as an aid to help in the selection of Thomas products. It is the responsibility of the user to determine the suitability of the product for the intended use and the user assumes all risk and liability whatsoever in connection therewith. Thomas does not warrant, guarantee or assume any obligation or liability in connection with this information.